

KOMATSU®

PC290LC-11

EPA Tier 4 Final Engine

Australia & New Zealand Specifications

HYDRAULIC EXCAVATOR



Photos may include optional equipment.

NET HORSEPOWER

147 kW / 196 HP @ 2050 rpm

OPERATING WEIGHT

29,800 – 31,210 kg

BUCKET CAPACITY

0.43 – 1.39 m³

PC290LC

SPECIFICATIONS



ENGINE

Model Komatsu SAA6D107E-3*
 Type Water-cooled, 4-cycle, direct injection
 Aspiration Variable geometry turbocharged, aftercooled, cooled EGR
 Number of cylinders 6
 Bore **107 mm** 4.21"
 Stroke **124 mm** 4.88"
 Piston displacement **6.69 ltr** 408 in³
 Horsepower:
 SAE J1995 Gross **159 kW 213 HP**
 ISO 9249 / SAE J1349 Net **147 kW 196 HP**
 Rated rpm **2050**
 Fan drive method for radiator cooling Mechanical
 Governor All-speed control, electronic
 *EPA Tier 4 Final emissions certified



HYDRAULICS

Type HydraMind (Hydraulic Mechanical Intelligence) system, closed-centre system with load sensing valves and pressure compensated valves
 Number of selectable working modes 6
 Main pump:
 Type Variable displacement piston type
 Pumps for Boom, arm, bucket, swing, and travel circuits
 Maximum flow **490 ltr/min** 129.4 gal/min
 Supply for control circuit Self-reducing valve
 Hydraulic motors:
 Travel 2 x axial piston motors with parking brake
 Swing 1 x axial piston motor with swing holding brake
 Relief valve setting:
 Implement circuits **37.3 MPa 380 kgf/cm²** 5,400 psi
 Travel circuit **37.3 MPa 380 kgf/cm²** 5,400 psi
 Swing circuit **28.9 MPa 295 kgf/cm²** 4,190 psi
 Pilot circuit **3.2 MPa 33 kgf/cm²** 470 psi
 Hydraulic cylinders:
 (Number of cylinders – bore x stroke x rod diameter)
 Boom **2–140 mm x 1300 mm x 100 mm** 5.5" x 51.2" x 3.9"
 Arm **1–150 mm x 1635 mm x 110 mm** 5.9" x 64.3" x 4.3"
 Bucket... **1–140 mm x 1009 mm x 100 mm** 5.5" x 39.7" x 3.9"



DRIVES AND BRAKES

Steering control Two levers with pedals
 Drive method Hydrostatic
 Maximum drawbar pull **249 kN 25400 kg** 56,000 lb
 Gradeability 70%, 35°
 Maximum travel speed (auto-shift):
 High **5.5 km/h** 3.4 mph
 Mid **4.1 km/h** 2.5 mph
 Low **3.0 km/h** 1.9 mph
 Service brake Hydraulic lock
 Parking brake Mechanical disc brake



SWING SYSTEM

Drive method Hydrostatic
 Swing reduction Planetary gear
 Swing circle lubrication Grease-bathed
 Service brake Hydraulic lock
 Holding brake/Swing lock Mechanical disc brake
 Swing speed 10.5 rpm
 Swing torque **8889 kg•m** 64,292 ft lbs



UNDERCARRIAGE

Centre frame X-frame
 Track frame Box-section
 Seal of track Sealed track
 Track adjuster Hydraulic
 Number of shoes (each side) 48
 Number of carrier rollers (each side) 2
 Number of track rollers (each side) 8



COOLANT & LUBRICANT CAPACITY (REFILLING)

Fuel tank **400 ltr** 105.7 U.S. gal
 Coolant **36 ltr** 9.5 U.S. gal
 Engine **23.1 ltr** 6.1 U.S. gal
 Final drive, each side **8.0 ltr** 2.1 U.S. gal
 Swing drive **7.2 ltr** 1.9 U.S. gal
 Hydraulic tank **132 ltr** 34.9 U.S. gal
 Hydraulic system **253 ltr** 66.8 U.S. gal
 DEF tank **23.1 ltr** 6.1 U.S. gal



OPERATING WEIGHT (APPROXIMATE)

Operating weight includes **6150 mm** one-piece HD boom, **3200 mm** HD arm, rated capacity of lubricants, coolant, full fuel tank, operator, standard equipment, KGA dual lock quick hitch, and SAE heaped **1.39 m³** bucket.

Triple-Grouser Shoes	Operating Weight	Ground Pressure
600 mm	30,330 kg	0.58 kg/cm²
700 mm	30,730 kg	0.50 kg/cm²
800 mm	31,130 kg	0.45 kg/cm²

Component Weights

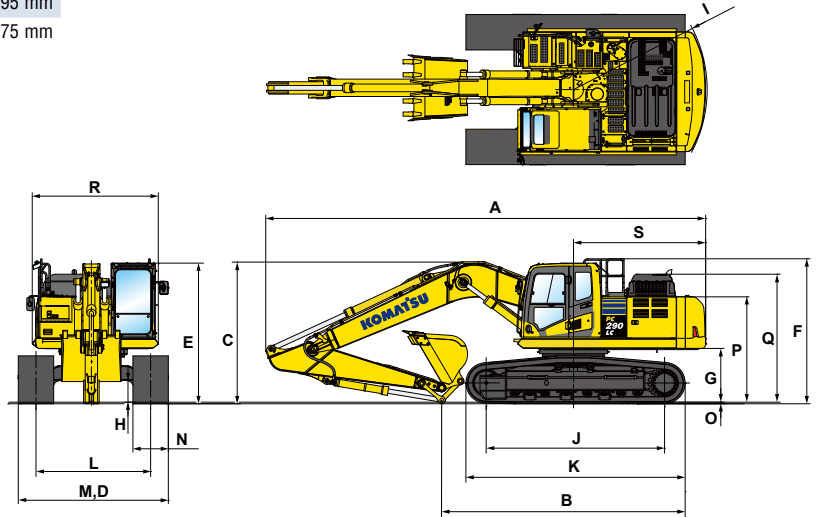
Arm including bucket cylinder and linkage
2500 mm HD arm assembly **1410 kg** 3,108 lb
3200 mm HD arm assembly **1470 kg** 3,240 lb
3500 mm HD arm assembly **1550 kg** 3,417 lb
 One piece HD boom including arm cylinder
6150 mm boom assembly **2448 kg** 5,397 lb
 Boom cylinders x 2 **231 kg** 509 lb
 Counterweight (standard) **5200 kg** 11,464 lb



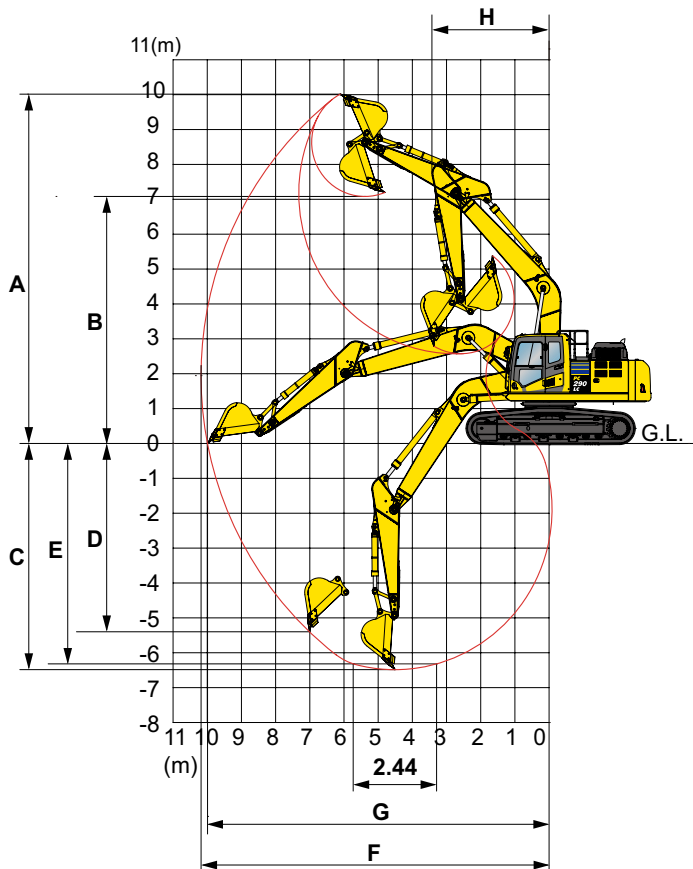
DIMENSIONS

	Arm Length	3200 mm	2500 mm	3500 mm
A	Overall length	10265 mm	10317 mm	10275 mm
B	Length on ground (transport)	5770 mm	6628 mm	5495 mm
C	Overall height (to top of boom)*	3295 mm	3367 mm	3375 mm
D	Overall width	3390 mm		
E	Overall height (to top of cab)*	3180 mm		
F	Overall height (to top of handrail)*	3275 mm		
G	Ground clearance, counterweight	1215 mm		
H	Ground clearance, minimum	495 mm		
I	Tail swing radius	3020 mm		
J	Track length on ground	4030 mm		
K	Track length	4955 mm		
L	Track gauge	2590 mm		
M	Width of crawler	3390 mm		
N	Shoe width	800 mm		
O	Grouser height	36 mm		
P	Machine height to top of counterweight	2380 mm		
Q	Machine height to top of engine cover	2895 mm		
R	Machine upper width	2850 mm		
S	Distance, swing centre to rear end	2985 mm		

* : Including grouser height



WORKING RANGE

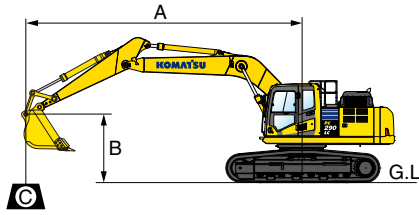


	Arm Length	3200 mm	2500 mm	3500 mm
A	Max. digging height	10300 mm	9840 mm	10355 mm
B	Max. dumping height	7375 mm	6972 mm	7435 mm
C	Max. digging depth	6910 mm	6208 mm	7220 mm
D	Max. vertical wall digging depth	5790 mm	4314 mm	5850 mm
E	Max. digging depth for 8' level bottom	6750 mm	6008 mm	7070 mm
F	Max. digging reach	10710 mm	9957 mm	10890 mm
G	Max. digging reach at ground level	10450 mm	9763 mm	10715 mm
H	Min. swing radius	3680 mm	3722 mm	3740 mm
SAE rating	Bucket digging force at power max.	176 kN 17900 kg	176 kN 17900 kg	176 kN 17900 kg
	Arm crowd force at power max.	129 kN 13100 kg	165 kN 16800 kg	121 kN 12400 kg
ISO rating	Bucket digging force at power max.	198 kN 20200 kg	198 kN 20200 kg	198 kN 20200 kg
	Arm crowd force at power max.	133 kN 13600 kg	170 kN 17300 kg	125 kN 12800 kg

LIFT CAPACITIES



LIFTING CAPACITY WITH LIFTING MODE



- A: Reach from swing centre
- B: Bucket hook height
- C: Lifting capacity
- Cf: Rating over front
- Cs: Rating over side
- ☉ : Rating at maximum reach

- Conditions:
- Boom length: 6150 mm
 - Arm length: 3200 mm
 - Shoes: 600 triple grouser
 - Bucket: 808 kg

Unit: kg

B \ A	1.5 m		3.0 m		4.5 m		6.0 m		7.5 m		☉ MAX	
	Cf	Cs	Cf	Cs	Cf	Cs	Cf	Cs	Cf	Cs	Cf	Cs
6.0 m									*5600	5300	*3400	*3400
4.5 m							*7150	*7150	*6350	5150	*3450	*3450
3.0 m			*8850	*8850	*11100	*11100	*8400	7100	*7150	4950	*3650	3500
1.5 m					*13800	10400	*9750	6700	7550	4750	*3950	3350
0 m			*8150	*8150	*15100	9900	10500	6400	7350	4550	*4550	3400
-1.5 m	*8250	*8250	*9750	*9750	*15200	9700	10350	6250	7250	4450	*5550	3700
-3.0 m	*10700	*10700	*16500	*16500	*14550	9750	10300	6200	7250	4450	6950	4250
-4.5 m			*17800	*17800	*12800	9950	*9450	6350			*8100	5650

*Load is limited by hydraulic capacity rather than tipping. Ratings are based on SAE standard No. J1097. Rated loads do not exceed 87% of hydraulic lift capacity or 75% of tipping load.



PC290LC-11



STANDARD EQUIPMENT

- 3 speed travel with auto shift
- Alternator, 90 A, 24 V
- AM/FM radio
- Arm, 3200 mm
- Auto idle
- Auto idle shut down
- Automatic air conditioner, large capacity
- Automatic engine warm-up system
- Auxiliary input (3.5 mm jack)
- Batteries, large capacity
- Battery isolation switch, lockable
- Boom, 6150 mm
- Boom and arm burst valve protection
- Bump rails
- Cab guards
 - Lower front window guard
 - Integrated top guard, OPG Level 1
 - Bolt on top guard, OPG Level 2
- Carrier rollers, (2 each side)
- Converter, (2) x 12 V
- Counterweight, 5200 kg
- Dry type air cleaner, double element
- Dual flow hammer piping
- Electric horn
- Emergency stops (3)
- EMMS monitoring system
- Engine, Komatsu SAA6D107E-E
- Fan guard structure
- Fuel system pre-filter 10 micron
- High back air suspension seat, with heat
- High pressure in-line hydraulic filters
- Hydraulic track adjusters
- Hydraumind closed centre load sensing system
- KOMTRAX Level 5.0
- Large LCD colour monitor, high resolution
- Level indicator
- Lock lever
- Lock lever, auto-lock
- Mirrors (LH, RH & sidewise)
- Operator identification system
- Overload alarm
- Power maximising system
- PPC hydraulic control system
- Proportional control handles
- Provision for tilt circuit, including valve
- Pump/engine room partition cover
- Quick hitch piping with safety switch and alarm
- Radiator and oil cooler dustproof net
- Rear reflectors
- Rearview monitoring system (1 camera)
- Revolving frame undercovers
- ROPS cab (ISO 12117-2) with vandal guard provisions
- Rotating beacon with guard
- Seat belt indicator
- Seat belt, retractable, 78 mm
- Secondary engine shutdown switch
- Side by side coolers
- Slip resistant foot plates
- Starter motor, 5.5 kW/24 V x 1
- Suction fan
- Thermal and fan guards
- Track frame swivel guard
- Track roller guides, 3 each side
- Track rollers, 8 each side
- Track shoes, triple grouser, 600 mm
- Travel alarm
- Working lights
 - 1 x boom
 - 1 x RH
 - 3 x cab
 - 1 x counterweight
- Working mode selection system



OPTIONAL EQUIPMENT

- Arm, 2500 mm
- Arm, 3500 mm
- Autogrease system
- Battery isolation switch, dual pole, lockable
- Belly plates, 8 mm
- Cab guard
 - Full front guard, OPG Level 2
- Cab vandal guard set
- Canvas seat cover
- Fire extinguisher, 1.5 kg
- Fire extinguisher, 4.5 kg
- Fire extinguisher, 9 kg
- Fuel cap vandal guard
- Jump start receptacle
- Radio, multimedia system
- Radio, UHF
- Starter circuit isolation, lockable
- Track roller guards, full length
- Track shoes, triple grouser, 700 mm
- Track shoes, triple grouser, 800 mm
- Turbo timer
- Window tinting

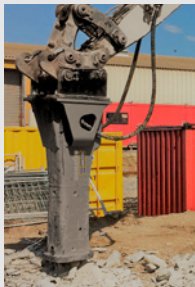


ATTACHMENT OPTIONS

- Bucket, general purpose, KGA 600 mm, 0.43 m³
- Bucket, general purpose, KGA 900 mm, 0.75 m³
- Bucket, general purpose, KGA 1200 mm, 1.08 m³
- Bucket, general purpose, KGA 1500 mm, 1.39 m³
- Bucket, slope finishing, KGA 2000 mm, 1.64 m³
- Quick hitch, KGA, dual lock
- Quick hitch, KGA, dual lock, tilting
- Ripper, KGA, single tyne

COMING SOON

KOMATSU JMHB230V-1 Hydraulic Breaker



Model Type	JMHB230V-1	
Working weight	kg	1,450
Oil flow (min - max)	ℓ /min	120 - 170
Operating pressure (max)	MPa	135
Impact rate	bpm	285 - 1,050
Chisel diameter	mm	122
Acceptable back pressure	bar	8
Base machine (min - max)	Ton	18 - 30

For a complete list of available attachments, please contact your local Komatsu representative.