

KOBELCO

SK250-10/SK260LC-10

SK250 SK260_{LC}



We Save You Fuel
Achieving a Low-Carbon Society



Engine

Model	J05ETB-KSSF
Type	Direct injection, water-cooled, 4-cycle diesel engine with turbocharger, intercooler
No. of cylinders	4
Bore and stroke	112 mm x 130 mm
Displacement	5.123 L
Rated power output	137 kW/2,100 min ⁻¹ (ISO 14396:Without fan)
	132 kW/2,100 min ⁻¹ (ISO 9249:With fan)
Max. torque	654 N·m/1,600 min ⁻¹ (ISO 14396:Without fan)
	639 N·m/1,600 min ⁻¹ (ISO 9249:With fan)



Hydraulic System

Pump	
Type	Two variable displacement pumps + One gear pump
Max. discharge flow	2 x 245 L/min, 1 x 21 L/min
	Extra gear pump 1 x 46 L/min
Relief valve setting	
Boom, arm and bucket Excavating circuits (main)	34.3 MPa {350 kgf/cm ² }
Power Boost	37.8 MPa {385 kgf/cm ² }
Travel circuit	34.3 MPa {350 kgf/cm ² }
Swing circuit	28.4 MPa {290 kgf/cm ² }
Pilot control circuit	5.0 MPa {50 kgf/cm ² }
Pilot control pump	Gear type
Main control valve	8-spool
Oil cooler	Air cooled type



Swing System

Swing motor	Axial piston motor
Brake	Hydraulic; locking automatically when the swing control lever is in neutral position
Parking brake	Oil disc brake, hydraulic operated automatically
Swing speed	10.8 min ⁻¹ {rpm}
Swing torque	88 kN·m
Tail swing radius	3,100 mm
Min. front swing radius	3,910 mm



Attachments

Backhoe bucket and combination

Use			Backhoe bucket			
			Normal digging			Light-duty
Bucket capacity	ISO heaped	m ³	0.81	1.0	1.2	1.4
Struck		m ³	0.59	0.76	0.84	1.0
Opening width	With side cutter	mm	1,060	1,270	1,440	–
	Without side cutter	mm	960	1,180	1,340	1,510
No. of teeth			4	5	5	6
Bucket weight		kg	700	810	850	890
Combination	2.5 m short arm		○	○	◎	△
	2.98 m standard arm		○	◎	△	△
	3.66 m long arm		◎	△	△	×

◎ Standard ○ Recommended △ Loading only × Not recommended



Travel System

Travel motors	2 x axial-piston, two-step motors
Travel brakes	Hydraulic brake per motor
Parking brakes	Oil disc brake per motor
Travel shoes	47 (51) each side
Travel speed	6.1/3.8 km/h
Drawbar pulling force	245kN (ISO 7464)
Gradeability	70 % {35°}

() show SK260LC



Cab & Control

Cab	
All-weather, sound-suppressed steel cab mounted on the high suspension mounts filled with silicone oil and equipped with a heavy, insulated floor mat.	
Control	
Two hand levers and two foot pedals for travel	
Two hand levers for excavating and swing	
Electric rotary-type engine throttle	



Boom, Arm & Bucket

Boom cylinders	135 mm x 1,235 mm
Arm cylinder	145 mm x 1,635 mm
Bucket cylinder	125 mm x 1,200 mm



Refilling Capacities & Lubrications

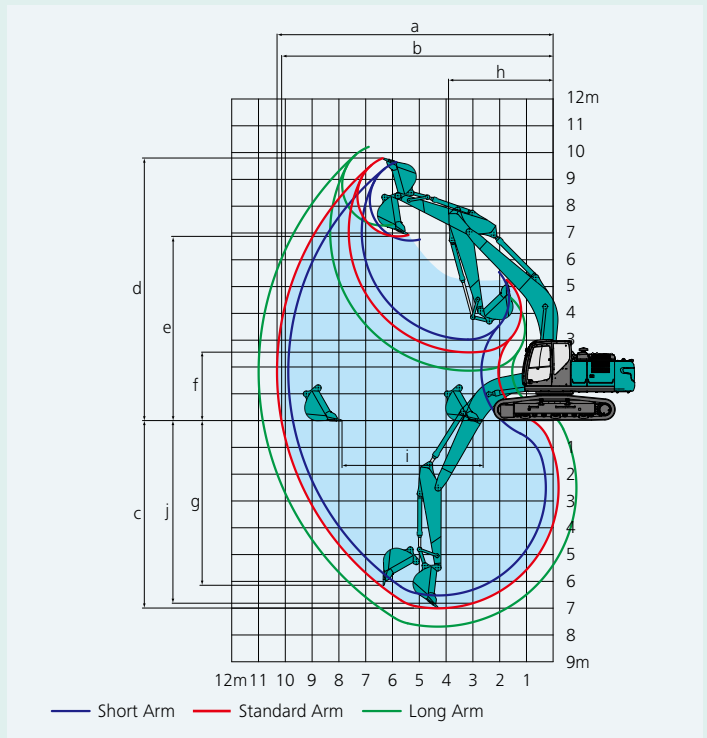
Fuel tank	403 L
Cooling system	21 L
Engine oil	21 L
Travel reduction gear	2 x 5.0 L
Swing reduction gear	5.0 L
Hydraulic oil tank	165 L tank oil level
	273 L hydraulic system



Working Ranges

Unit: m

Range	Arm	6.02 m		
		Short 2.5 m	Standard 2.98 m	Long 3.66 m
a-Max. digging reach		9.89	10.31	10.98
b-Max. digging reach at ground level		9.72	10.14	10.82
c-Max. digging depth		6.52	7.0	7.68
d-Max. digging height		9.65	9.79	10.22
e-Max. dumping clearance		6.72	6.88	7.28
f-Min. dumping clearance		3.03	2.55	1.87
g-Max. vertical wall digging depth		5.82	6.15	6.97
h-Min. swing radius		3.91	3.91	3.92
i-Horizontal digging stroke at ground level		4.2	5.26	6.48
j-Digging depth for 2.4 m (8') flat bottom		6.32	6.82	7.54
Bucket capacity ISO heaped m ³		1.2	1.0	0.81



Digging Force (ISO 6015)

Unit: kN (tf)

Arm length	Short 2.5 m	Standard 2.98 m	Long 3.66 m
Bucket digging force	170 {17.3} 187 {19.1}*	170 {17.3} 187 {19.1}*	170 {17.3} 187 {19.1}*
Arm crowding force	142 {14.5} 156 {15.9}*	119 {12.1} 131 {13.4}*	104 {10.6}

*Power Boost engaged.



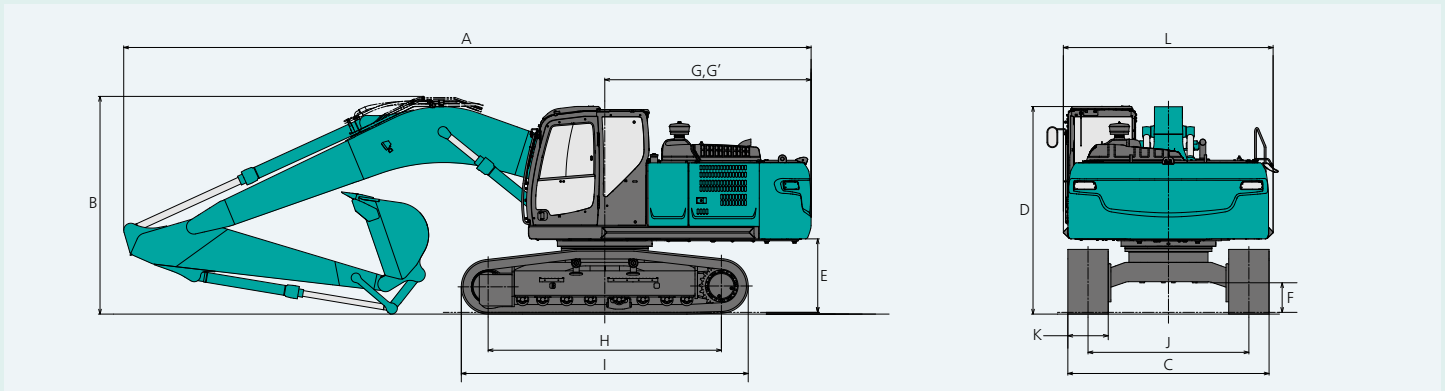
Dimensions

Arm length	Short 2.5 m	Standard 2.98 m	Long 3.66 m
A Overall length	10,270	10,210	10,230
B Overall height (to top of boom)	3,350	3,230	3,300
C Overall width of crawler	SK250	2,990	
	SK260LC	3,190	
D Overall height (to top of cab)	3,090		
E Ground clearance of rear end*	1,090		
F Ground clearance*	440		
G Tail swing radius	3,100		

Unit: mm

G'	Distance from center of swing to rear end	3,070
H Tumbler distance	SK250	3,470
	SK260LC	3,850
I Overall length of crawler	SK250	4,260
	SK260LC	4,640
J Track gauge	SK250	2,390
	SK260LC	2,590
K Shoe width	600	
L Overall width of upperstructure	3,120	

*Without including height of shoe

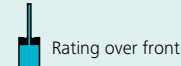
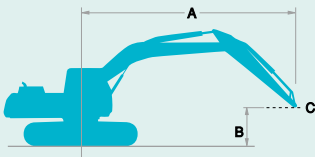


Operating Weight & Ground Pressure

In standard trim, with standard boom, 2.98 m arm, and 1.0 m³ ISO heaped bucket

Shaped	Triple grouser shoes (even height)				
		mm	600	700	800
Overall width of crawler	SK250	mm	2,990	3,090	3,190
	SK260LC	mm	3,190	3,290	3,390
Ground pressure	SK250	kPa	55	48	43
	SK260LC	kPa	52	44	40
Operating weight	SK250	kg	25,400	25,700	26,000
	SK260LC	kg	26,000	26,300	26,600

Lift Capacities



Rating over front



Rating over side or 360 degrees

A: Reach from swing centerline to arm top

B: Arm top height above/below ground

C: Lift point

Bucket: Without bucket

Relief valve setting: 37.8 MPa (385 kgf/cm²)

SK250		Boom: 6.02 m Arm: 2.98 m, Bucket: without Shoe: 600 mm (Heavy Lift)														
B	A	1.5 m		3.0 m		4.5 m		6.0 m		7.5 m		At Max. Reach		Radius		
7.5 m	kg													*4,950	*4,950	6.70 m
6.0 m	kg							*5,830	*5,830	*5,870	4,530	*4,680	4,270	*4,680	4,270	7.73 m
4.5 m	kg							*6,620	*6,300	*6,150	4,420	*4,640	3,660	*4,640	3,660	8.37 m
3.0 m	kg					*10,120	8,970	*7,760	5,910	6,070	4,240	*4,770	3,340	*4,770	3,340	8.71 m
1.5 m	kg					*12,300	8,240	8,160	5,550	5,870	4,060	4,640	3,210	4,640	3,210	8.78 m
G.L.	kg					12,290	7,880	7,890	5,300	5,720	3,920	4,730	3,250	4,730	3,250	8.58 m
-1.5 m	kg	*7,400	*7,400	*11,580	*11,580	12,190	7,790	7,770	5,200	5,660	3,860	5,100	3,500	5,100	3,500	8.11 m
-3.0 m	kg	*13,030	*13,030	*18,520	15,400	12,290	7,880	7,810	5,230			5,950	4,070	5,950	4,070	7.30 m
-4.5 m	kg			*15,660	*15,660	*11,260	8,150	8,080	5,480			*8,050	5,460	*8,050	5,460	6.01 m

SK250		Boom: 6.02 m Arm: 3.66 m, Bucket: without Shoe: 600 mm (Heavy Lift)														
B	A	1.5 m		3.0 m		4.5 m		6.0 m		7.5 m		9.0 m		At Max. Reach		Radius
7.5 m	kg									*3,900	*3,900			*3,630	*3,630	7.56 m
6.0 m	kg									*5,120	4,610			*3,440	*3,440	8.49 m
4.5 m	kg							*5,800	*5,800	*5,490	4,470	*3,820	3,240	*3,400	3,190	9.08 m
3.0 m	kg			*13,840	*13,840	*8,820	*8,820	*6,990	6,000	6,100	4,260	4,550	3,160	*3,470	2,930	9.39 m
1.5 m	kg					*11,250	8,410	8,220	5,590	5,860	4,040	4,440	3,060	*3,650	2,820	9.45 m
G.L.	kg			*7,080	*7,080	12,320	7,890	7,870	5,280	5,670	3,860	4,350	2,970	*3,990	2,840	9.27 m
-1.5 m	kg	*6,520	*6,520	*10,590	*10,590	12,070	7,680	7,680	5,110	5,560	3,760			4,430	3,020	8.83 m
-3.0 m	kg	*10,620	*10,620	*15,530	15,000	12,080	7,680	7,650	5,080	5,560	3,760			5,020	3,420	8.10 m
-4.5 m	kg	*15,670	*15,670	*17,400	15,400	*12,140	7,860	7,790	5,210					6,330	4,300	6.96 m
-6.0 m	kg					*9,160	8,310							*7,590	6,830	5.17 m

SK250		Boom: 6.02 m Arm: 2.5 m, Bucket: without Shoe: 600 mm (Heavy Lift)												
B	A	3.0 m		4.5 m		6.0 m		7.5 m		At Max. Reach		Radius		
7.5 m	kg					*6,390	*6,390					*6,470	6,210	6.14 m
6.0 m	kg					*6,360	*6,360					*6,420	4,650	7.26 m
4.5 m	kg			*8,480	*8,480	*7,090	6,160	6,160	4,330	5,600	3,920	3,920	3,920	7.94 m
3.0 m	kg			*10,880	8,680	*8,170	5,780	5,780	5,990	4,160	5,120	3,550	3,550	8.29 m
1.5 m	kg			12,470	8,030	8,050	5,440	5,810	4,000	4,950	3,420	4,950	3,420	8.36 m
G.L.	kg			12,180	7,780	7,820	5,240	5,690	3,890	5,060	3,480	5,060	3,480	8.16 m
-1.5 m	kg	*11,430	*11,430	12,160	7,760	7,750	5,180	5,680	3,870	5,520	3,780	5,520	3,780	7.66 m
-3.0 m	kg	*17,290	15,540	12,330	7,910	7,850	5,270			6,620	4,510	6,620	4,510	6.79 m
-4.5 m	kg	*13,980	*13,980	*10,230	8,280					*8,230	6,460	*8,230	6,460	5.38 m

SK260LC		Boom: 6.02 m Arm: 2.98 m, Bucket: without Shoe: 600 mm (Heavy Lift)														
B	A	1.5 m		3.0 m		4.5 m		6.0 m		7.5 m		At Max. Reach		Radius		
7.5 m	kg													*4,950	*4,950	6.70 m
6.0 m	kg							*5,830	*5,830	*5,870	5,000	*4,680	4,680	*4,680	4,680	7.73 m
4.5 m	kg							*6,620	*6,620	*6,150	4,890	*4,640	4,060	*4,640	4,060	8.37 m
3.0 m	kg					*10,120	10,040	*7,760	6,570	*6,690	4,710	*4,770	3,720	*4,770	3,720	8.71 m
1.5 m	kg					*12,300	9,290	*8,910	6,200	6,860	4,520	*5,080	3,590	*5,080	3,590	8.78 m
G.L.	kg					*13,450	8,910	9,330	5,940	6,700	4,380	5,520	3,640	5,520	3,640	8.58 m
-1.5 m	kg	*7,400	*7,400	*11,580	*11,580	*13,650	8,820	9,210	5,830	6,640	4,320	5,960	3,910	5,960	3,910	8.11 m
-3.0 m	kg	*13,030	*13,030	*18,520	17,850	*13,020	8,910	9,250	5,870			6,980	4,550	6,980	4,550	7.30 m
-4.5 m	kg			*15,660	*15,660	*11,260	9,190	*8,090	6,120			*8,050	6,100	*8,050	6,100	6.01 m

Notes:

- Do not attempt to lift or hold any load that is greater than these lift capacities at their specified lift point radius and heights. Weight of all accessories must be deducted from the above lift capacities.
- Lift capacities are based on machine standing on level, firm, and uniform ground. User must make allowance for job conditions such as soft or uneven ground, out of level conditions, side loads, sudden stopping of loads, hazardous conditions, experience of personnel, etc.
- Arm top defined as lift point.
- The above lift capacities are in compliance with ISO 10567. They do not exceed 87% of hydraulic lift capacity or 75% of tipping load. Lift capacities marked with an asterisk (*) are limited by hydraulic capacity rather than tipping load.
- Operator should be fully acquainted with the Operator's and Maintenance Instructions before operating this machine. Rules for safe operation of equipment should be adhered to at all times.
- Lift capacities apply to only machine as originally manufactured and normally equipped by KOBELCO CONSTRUCTION MACHINERY CO., LTD.

SK260LC		Boom: 6.02 m Arm: 3.66 m, Bucket: without Shoe: 600 mm (Heavy Lift)														
B \ A		1.5 m		3.0 m		4.5 m		6.0 m		7.5 m		9.0 m		At Max. Reach		Radius
7.5 m	kg									*3,900	*3,900			*3,630	*3,630	7.56 m
6.0 m	kg									*5,120	5,080			*3,440	*3,440	8.49 m
4.5 m	kg							*5,800	*5,800	*5,490	4,940	*3,820	3,610	*3,400	*3,400	9.08 m
3.0 m	kg			*13,840	*13,840	*8,820	*8,820	*6,990	6,660	*6,120	4,730	*5,280	3,520	*3,470	3,270	9.39 m
1.5 m	kg					*11,250	9,470	*8,260	6,240	*6,820	4,510	5,180	3,420	*3,650	3,160	9.45 m
G.L.	kg			*7,080	*7,080	*12,860	8,920	*9,280	5,920	6,660	4,320	5,090	3,330	*3,990	3,190	9.27 m
-1.5 m	kg	*6,520	*6,520	*10,590	*10,590	*13,500	8,710	9,130	5,750	6,540	4,220			*4,550	3,380	8.83 m
-3.0 m	kg	*10,620	*10,620	*15,530	*15,530	*13,300	8,710	9,090	5,720	6,540	4,220			*5,560	3,830	8.10 m
-4.5 m	kg	*15,670	*15,670	*17,400	*17,400	*12,140	8,900	*8,990	5,850					*7,300	4,820	6.96 m
-6.0 m	kg					*9,160	*9,160							*7,590	*7,590	5.17 m

SK260LC		Boom: 6.02 m Arm: 2.5 m, Bucket: without Shoe: 600 mm (Heavy Lift)												
B \ A		3.0 m		4.5 m		6.0 m		7.5 m		At Max. Reach		Radius		
7.5 m	kg					*6,390	*6,390					*6,470	*6,470	6.14 m
6.0 m	kg					*6,360	*6,360					*6,420	5,140	7.26 m
4.5 m	kg			*8,480	*8,480	*7,090	6,820	*6,540	4,790	*6,420	4,350	*6,420	4,350	7.94 m
3.0 m	kg			*10,880	9,740	*8,170	6,430	6,980	4,630	5,960	3,960	*6,420	3,960	8.29 m
1.5 m	kg			*12,820	9,070	*9,210	6,090	6,800	4,460	5,780	3,810	*6,420	3,810	8.36 m
G.L.	kg			*13,590	8,810	9,260	5,870	6,670	4,350	5,920	3,890	*6,420	3,890	8.16 m
-1.5 m	kg	*11,430	*11,430	*13,470	8,790	9,190	5,810	6,660	4,340	6,470	4,230	*6,470	4,230	7.66 m
-3.0 m	kg	*17,290	*17,290	*12,540	8,940	9,300	5,910			7,790	5,050	*6,470	5,050	6.79 m
-4.5 m	kg	*13,980	*13,980	*10,230	9,320							*8,230	7,230	5.38 m

STANDARD EQUIPMENT

ENGINE

- Engine, HINO J05ETB-KSSF, diesel engine with turbocharger and intercooler
- Automatic engine deceleration
- Auto Idle Stop (AIS)
- Batteries (2 x 12V - 96Ah)
- Starting motor (24V - 5 kW), 60 amp alternator
- Automatic engine shut-down for low engine oil pressure
- Engine oil pan drain cock
- Double element air cleaner

CONTROL

- Working mode selector (H-mode, S-mode and ECO-mode)
- Power Boost

SWING SYSTEM & TRAVEL SYSTEM

- Swing rebound prevention system
- Straight propel system
- Two-speed travel with automatic shift down
- Sealed & lubricated track links
- Grease-type track adjusters
- Automatic swing brake

HYDRAULIC

- Arm regeneration system
- Auto warm up system
- Aluminum hydraulic oil cooler

MIRRORS & LIGHTS

- Two rear view mirrors
- Three front working lights (2 for boom, one for right storage box)

CAB & CONTROL

- Two control levers, pilot-operated
- Horn, electric
- Cab light (interior)
- Luggage tray
- Large cup holder
- Detachable two-piece floor mat
- Headrest
- Handrails
- Intermittent windshield wiper with double-spray washer
- Skylight
- Tinted safety glass
- Pull-up type front window and removable lower front window
- Easy-to-read multi-display color monitor
- Automatic air conditioner
- Emergency escape hammer
- Suspension seat
- Radio (AUX & Bluetooth®)
- TOP guard
- Boom & Arm safety valve
- GEOSCAN
- Travel alarm
- Quick hitch piping

OPTIONAL EQUIPMENT

- Various optional arms
- Wide range of shoes
- Additional track guide
- Multi control valve
- Extra hydraulic circuit
- Two cab lights
- Air suspension seat
- Rain visor (may interfere with bucket action)

Note: Standard and optional equipment may vary. Consult your KOBELCO dealer for specifics. Bluetooth® is a registered trademark of the Bluetooth SIG Inc.